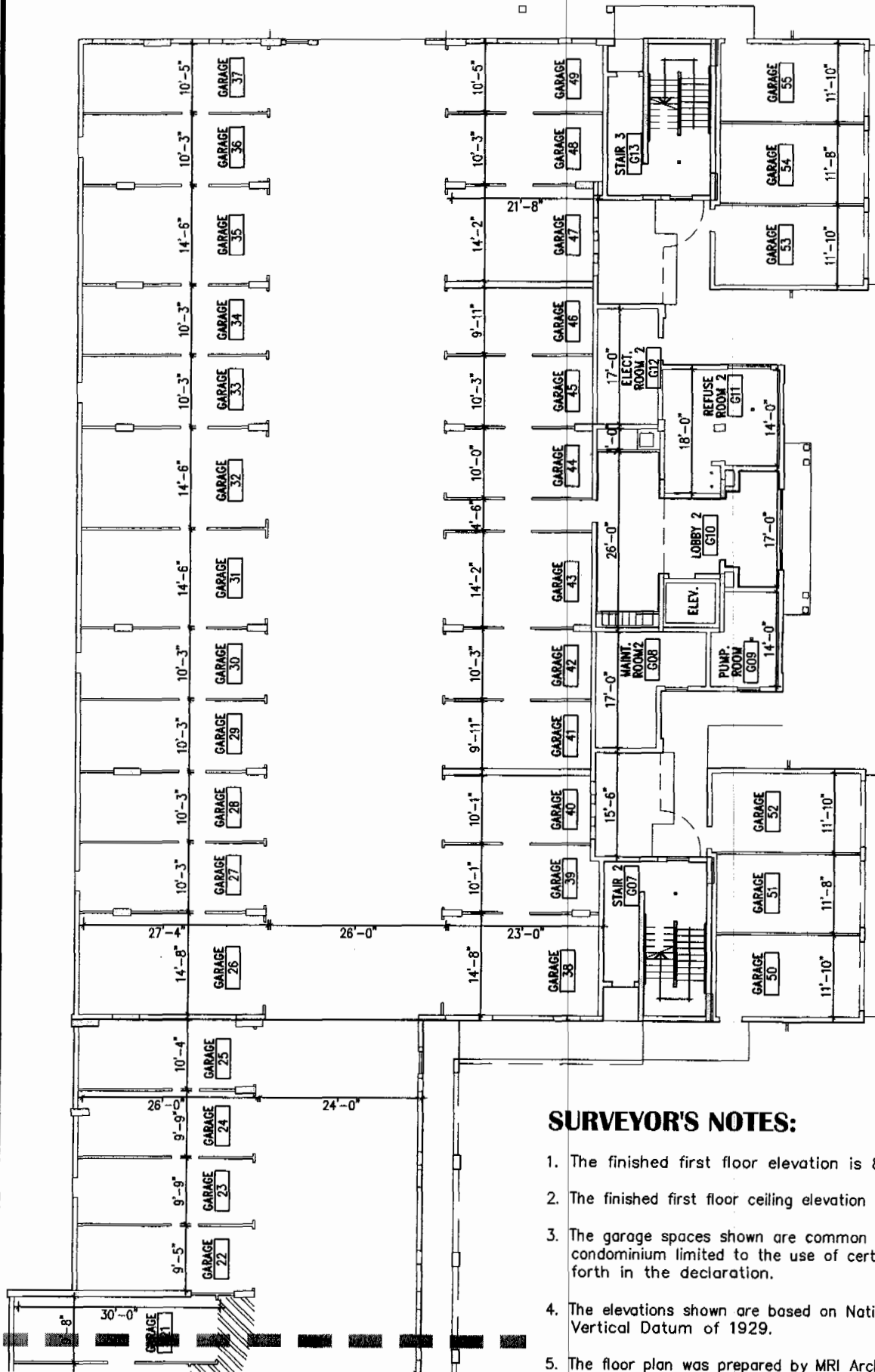


PHASE 2

BUILDING 2A - GARAGE FLOOR PLAN



SCALE: 1" = 20'

SURVEYOR'S NOTES:

1. The finished first floor elevation is 8.60 feet.
2. The finished first floor ceiling elevation is 17.60 feet.
3. The garage spaces shown are common elements of the condominium limited to the use of certain units as set forth in the declaration.
4. The elevations shown are based on National Geodetic Vertical Datum of 1929.
5. The floor plan was prepared by MRI Architectural Group Inc., 3000 North Atlantic Avenue, Cocoa Beach, Florida. This drawing was modified for this exhibit.

PHASE 2

BUILDING 2A - GARAGE FLOOR PLAN

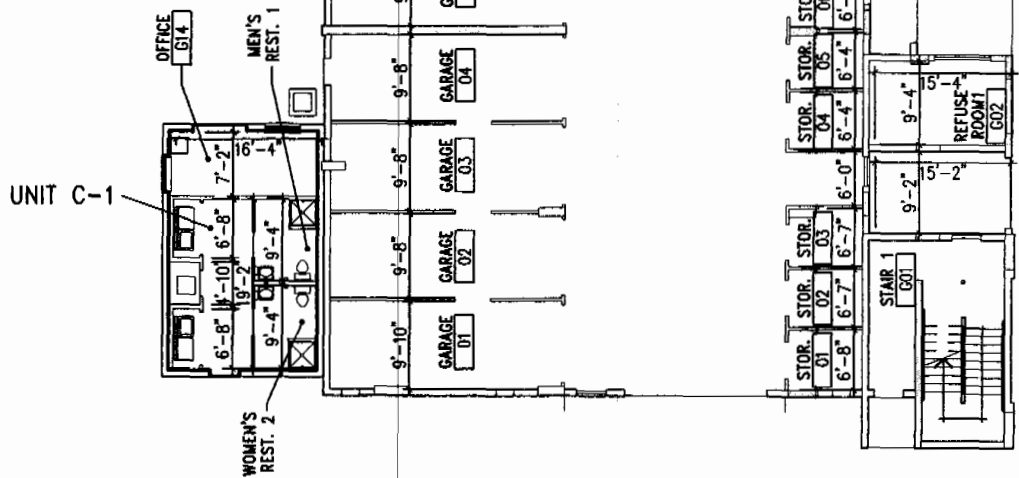
SEE SHEET 6

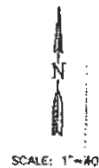


SCALE: 1"=20'

SURVEYOR'S NOTES:

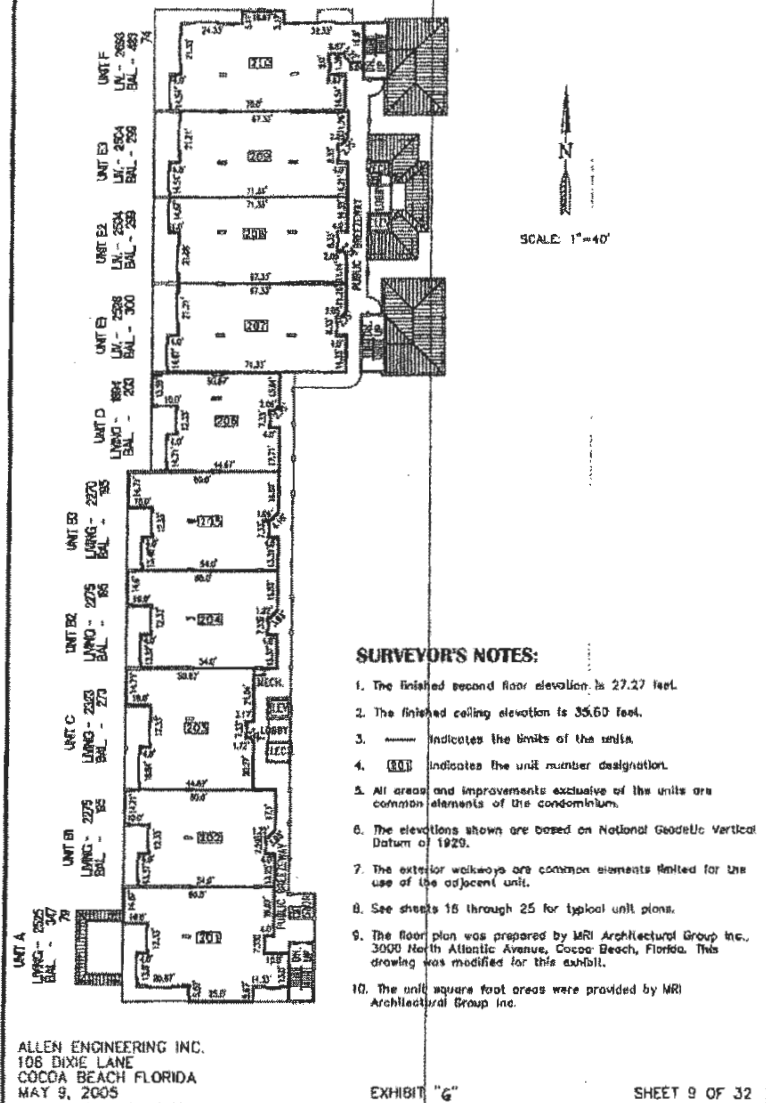
1. The finished first floor elevation is 8.60 feet.
2. The finished first floor ceiling elevation is 17.60 feet.
3. The garage spaces shown are common elements of the condominium limited to the use of certain units as set forth in the declaration.
4. The elevations shown are based on National Geodetic Vertical Datum of 1929.
5. The floor plan was prepared by MRI Architectural Group Inc., 3000 North Atlantic Avenue, Cocoa Beach, Florida. This drawing was modified for this exhibit.
6. ——— Indicates the limits of the units.



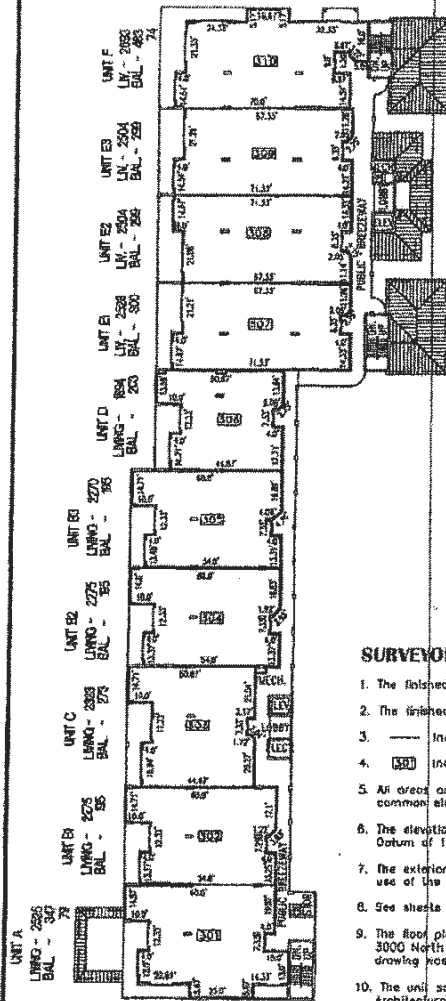


1. The finished first floor elevation is 18.27 feet.
2. The finished ceiling elevation is 26.50 feet.
3. _____ indicates the limits of the units.
4. (103) indicates the unit number designation.
5. All areas and improvements exclusive of the units are common elements of the condominium.
6. The elevations shown are based on National Geodetic Vertical Datum of 1929.
7. The exterior walkways are common elements limited for the use of the adjacent unit.
8. See sheets 16 through 25 for typical unit plans.
9. The floor plan was prepared by MRI Architectural Group Inc., 3400 North Atlantic Avenue, Cocoa Beach, Florida. This drawing was modified for this exhibit.
10. The unit square foot areas were provided by MRI Architectural Group Inc.

SHEET 8 OF 32



ISLAND POINTE, A CONDOMINIUM PHASE 2 BUILDING 2A - THIRD FLOOR PLAN



SURVEYOR'S NOTES:

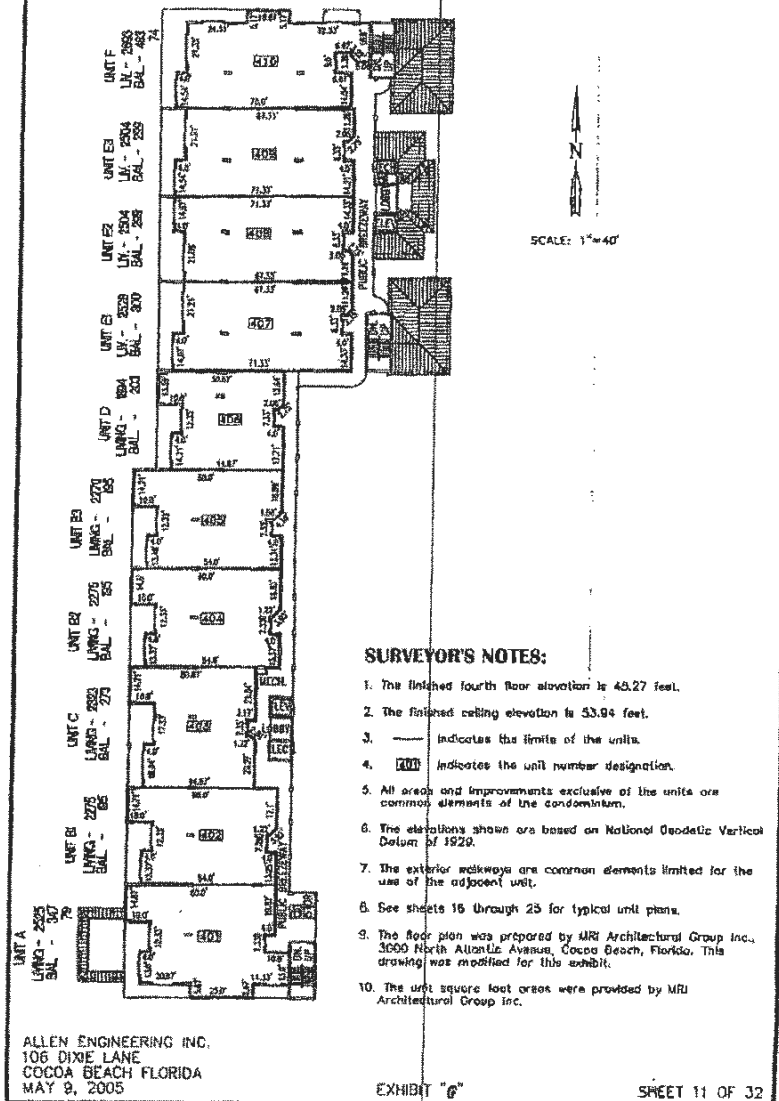
1. The finished third floor elevation is 36.27 feet.
2. The finished ceiling elevation is 44.60 feet.
3. ——— Indicates the limits of the units.
4. [50] Indicates the unit number designation.
5. All areas and improvements exclusive of the units are common elements of the condominium.
6. The elevations shown are based on National Geodetic Vertical Datum of 1929.
7. The exterior walkways are common elements limited for the use of the adjacent unit.
8. See sheets 16 through 25 for typical unit plans.
9. The floor plan was prepared by MRI Architectural Group Inc., 3000 North Atlantic Avenue, Cocoa Beach, Florida. This drawing was modified for this exhibit.
10. The unit square foot areas were provided by MRI Architectural Group Inc.

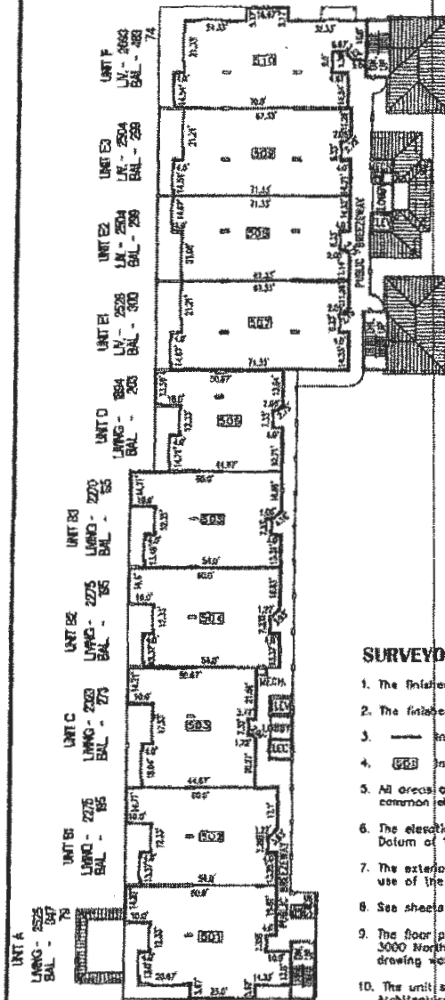
ALLEN ENGINEERING INC.
106 DIXIE LANE
COCOA BEACH FLORIDA
MAY 9, 2005

EXHIBIT "C"

SHEET 10 OF 32

ISLAND POINTE, A CONDOMINIUM PHASE 2 BUILDING 2A - FOURTH FLOOR PLAN





SCALE: 1" = 40'

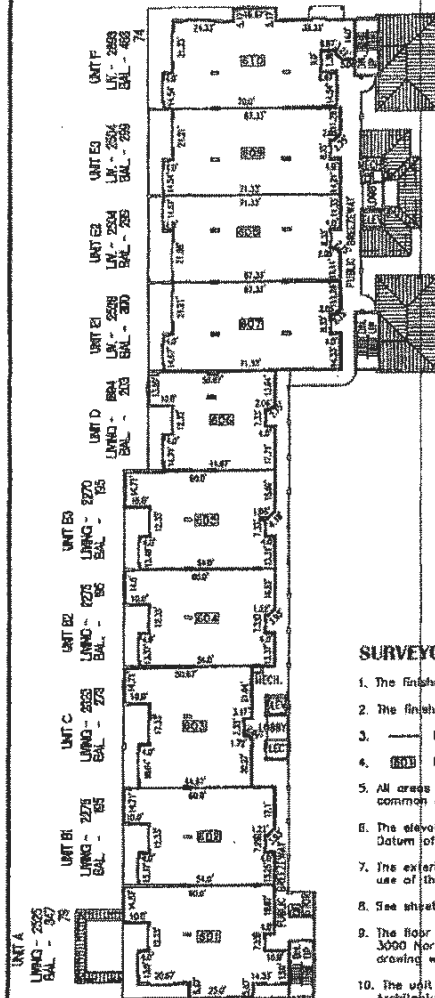
1. The finished fifth floor elevation is 84.80 feet.
2. The finished ceiling elevation is 83.27 feet.
3. --- indicates the limits of the units.
4. (55) indicates the unit number designation.
5. All areas and improvements exclusive of the units are common elements of the condominium.
6. The elevations shown are based on National Geodetic Vertical Datum of 1929.
7. The exterior walkways are common elements limited for the use of the adjacent unit.
8. See sheets 16 through 25 for typical unit plans.
9. The floor plan was prepared by MRI Architectural Group Inc., 3000 North Atlantic Blvd., Cocoa Beach, Florida. This drawing was modified for this exhibit.
10. The unit square foot areas were provided by MRI Architectural Group Inc.

ALLEN ENGINEERING INC.
105 DIXIE LANE
COCOA BEACH FLORIDA
MAY 9, 2005

EXHIBIT "G"

SHEET 12 OF 32

ISLAND POINTE, A CONDOMINIUM PHASE 2 BUILDING 2A - SIXTH FLOOR PLAN



SCALE: 1"=40'

SURVEYOR'S NOTES:

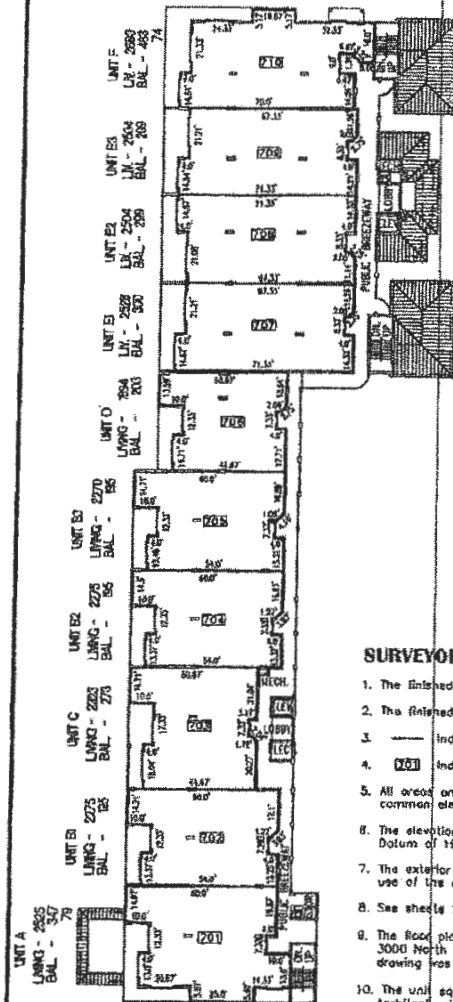
1. The finished sixth floor elevation is 83.93 feet.
2. The finished ceiling elevation is 72.60 feet.
3. ——— Indicates the limits of the units.
4. (XXX) Indicates the unit number designation.
5. All areas and improvements exclusive of the units are common elements of the condominium.
6. The elevations shown are based on National Geodetic Vertical Datum of 1928.
7. The exterior walkways are common elements limited for the use of the adjacent unit.
8. See sheets 16 through 25 for typical unit plans.
9. The floor plan was prepared by WRI Architectural Group Inc., 3090 North Atlantic Avenue, Cocoa Beach, Florida. This drawing was modified for this exhibit.
10. The unit square foot areas were provided by WRI Architectural Group Inc.

ALLEN ENGINEERING INC.
106 DIXIE LANE
COCOA BEACH FLORIDA
MAY 9, 2005

EXHIBIT "8"

SHEET 13 OF 32

ISLAND POINTE, A CONDOMINIUM PHASE 2 BUILDING 2A - SEVENTH FLOOR PLAN



SURVEYOR'S NOTES:

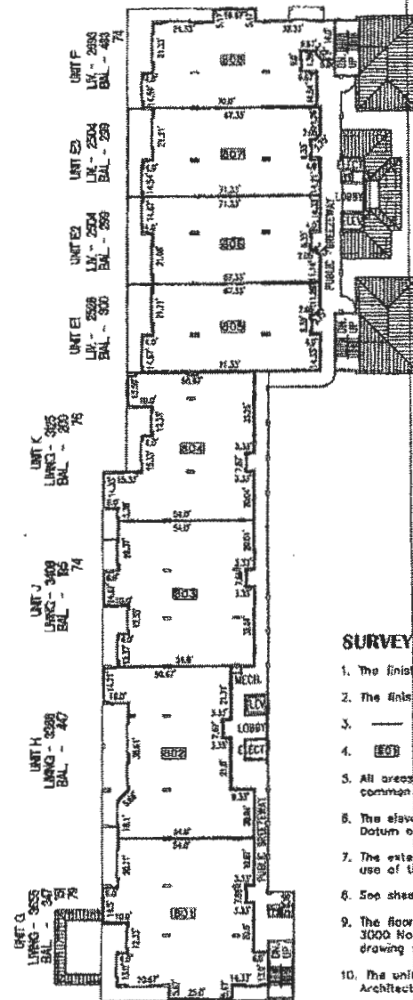
1. The finished seventh floor elevation is 73.27 feet.
2. The finished ceiling elevation is 82.64 feet.
3. ——— indicates the limits of the units.
4. (201) indicates the unit number designation.
5. All areas and improvements exclusive of the units are common elements of the condominium.
6. The elevations shown are based on National Geodetic Vertical Datum of 1929.
7. The exterior walkways are common elements limited for the use of the adjacent unit.
8. See sheets 16 through 25 for typical unit plans.
9. The floor plan was prepared by MBI Architectural Group Inc., 3000 North Atlantic Avenue, Cocoa Beach, Florida. This drawing was modified for this exhibit.
10. The unit square foot areas were provided by MBI Architectural Group Inc.

ALLEN ENGINEERING INC.
106 DIXIE LANE
COCOA BEACH FLORIDA
MAY 9, 2005

EXHIBIT "C"

SHEET 14 OF 32

ISLAND POINTE, A CONDOMINIUM PHASE 2 BUILDING 2A - PENTHOUSE FLOOR PLAN



SURVEYOR'S NOTES:

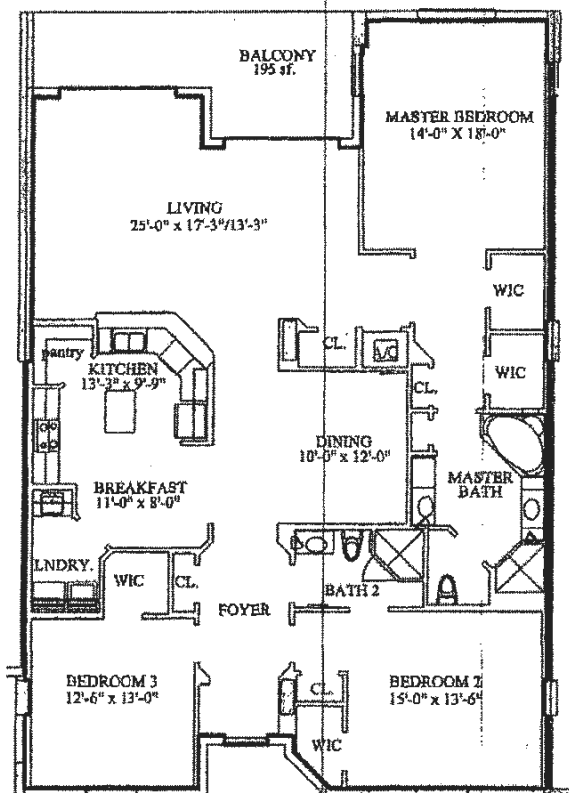
1. The finished penthouse floor elevation is 83.60 feet.
2. The finished ceiling elevation is 92.93 feet.
3. ——— Indicates the limits of the units.
4. [E01] Indicates the unit number designation.
5. All areas and improvements exclusive of the units are common elements of the condominium.
6. The elevations shown are based on National Geodetic Vertical Datum of 1929.
7. The exterior walkways are common elements limited for the use of the adjacent unit.
8. See sheets 22 through 29 for typical unit plans.
9. The floor plan was prepared by MRI Architectural Group Inc., 3000 North Atlantic Avenue, Cocoa Beach, Florida. This drawing was modified for this exhibit.
10. The unit square foot areas were provided by MRI Architectural Group Inc.

ALLEN ENGINEERING INC.
108 DIXIE LANE
COCOA BEACH, FLORIDA
MAY 9, 2005

EXHIBIT "G"

SHEET 15 OF 32

ISLAND POINTE, A CONDOMINIUM PHASE 2 BUILDING 2A - UNIT PLAN B2



UNIT B2
ISLAND POINTE
3 beds and 2 bath
LIVING - 2275 sf.
BALCONY - 195 sf.



SCALE: 1"=10'

SURVEYOR'S NOTES:

1. ——— Indicates the limits of the unit.
2. All areas and improvements exclusive of the unit are common elements of the condominium.
3. The unit plan shown is representational. The dimensions shown may vary.
4. Some units may be reversed or a mirror image of the plan shown.
5. Refer to the floor plan on sheets B through 14 for the location of this unit within the building.
6. The unit plan was prepared by MRI Architectural Group Inc., 3000 North Atlantic Avenue, Cocoa Beach, Florida. This drawing was modified for this exhibit.

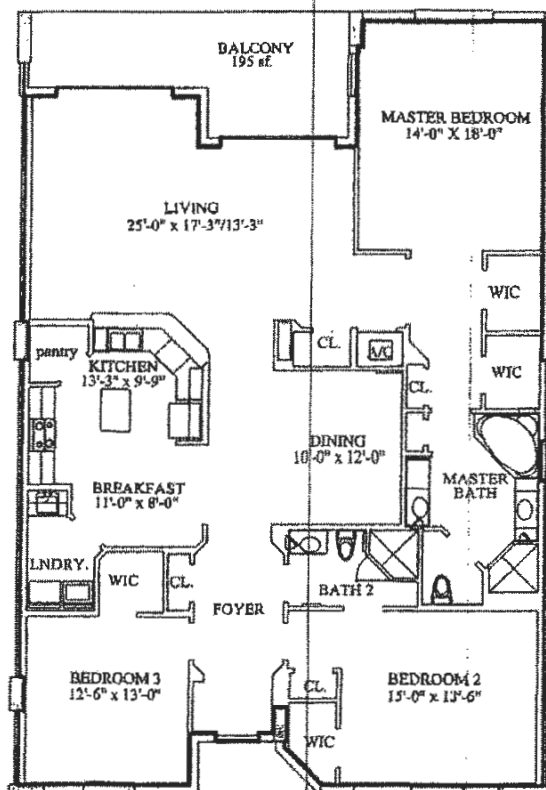
ALLEN ENGINEERING INC.
106 DIXIE LANE
COCOA BEACH FLORIDA
MAY 9, 2005

EXHIBIT "G"

SHEET 18 OF 32

L:\Survey\Drawings - D:\C:\1999\1999-05-12 Island Pointe Condominium - Phase 2\2005-05-15-05 AM

BUILDING 2A - UNIT PLAN B3



UNIT B3
ISLAND POINTE

3 bdrms and 2 bath
LIVING - 2270 sf.
BALCONY - 195 sf.



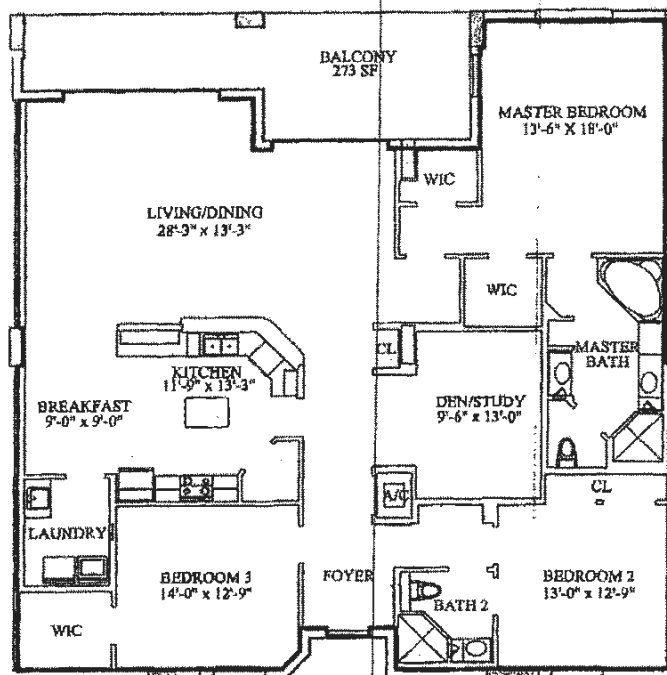
SCALE: 1"=10'

1. ~~Indicates~~ Indicates the limits of the unit.
2. All areas and improvements exclusive of the unit are common elements of the condominium.
3. The unit plan shown is representational. The dimensions shown may vary.
4. Some units may be reversed or a mirror image of the plan shown.
5. Refer to the floor plan on sheets 8 through 14 for the location of this unit within the building.
6. The unit plan was prepared by MRI Architectural Group Inc., 3000 North Atlantic Avenue, Cocoa Beach, Florida. This drawing was modified for this exhibit.

ALLEN ENGINEERING INC.
106 DIXIE LANE
COCOA BEACH FLORIDA
MAY 9, 2005

EXHIBIT "G"

SHEET 19 OF 32



3 bdrm and 2 bath with den/study
LIVING - 2,324' sf.
BALCONY - 273' sf.



SCALE: $1^{\text{st}} = 10^5$

1. Indicates the limits of the unit.
2. All areas and improvements exclusive of the unit are common elements of the condominium.
3. The unit plan shown is representational. The dimensions shown may vary.
4. Some units may be reversed or a mirror image of the plan shown.
5. Refer to the floor plan on sheets 8 through 14 for the location of this unit within the building.
6. The unit plan was prepared by MRI Architectural Group Inc., 3000 North Atlantic Avenue, Cocoa Beach, Florida. This drawing was modified for this exhibit.

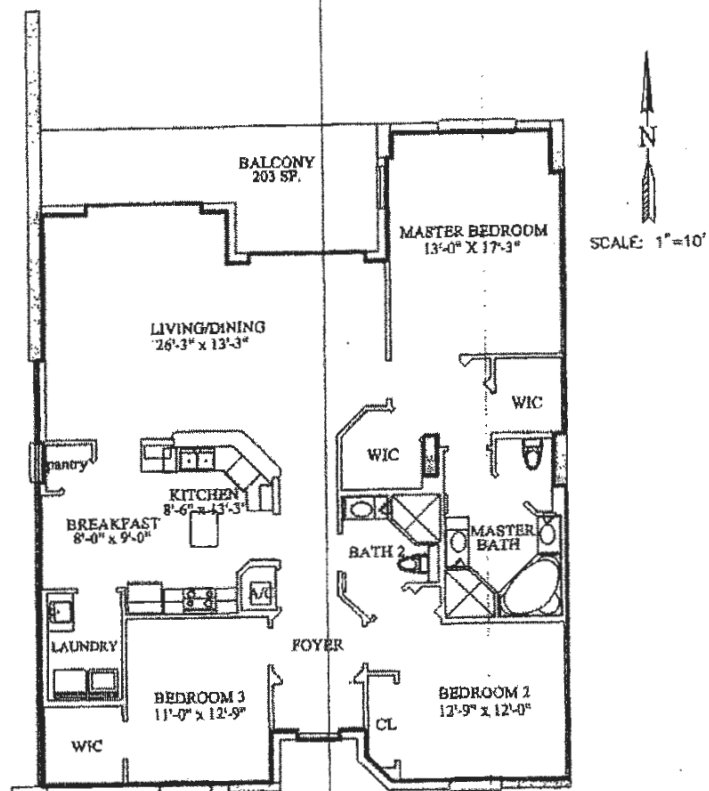
ALLEN ENGINEERING INC.
105 DIXIE LANE
COCOA BEACH FLORIDA
MAY 9, 2005

EXHIBIT "G"

SHEET 20 OF 32

1150 rous-altiravinos - DUGJ 0299/394 125.2 Island Pointe Condominiums - Ph.Dee 2:50:125.2 1394C" dno. 5/7/2005 9:16:42 AM

ISLAND POINTE, A CONDOMINIUM PHASE 2 BUILDING 2A - UNIT PLAN D



**UNIT D
ISLAND POINTE - 2A**

3 bdrm and 2 bath
LIVING - 1,193 sq. ft.
BALCONY - 203 sq. ft.

SURVEYOR'S NOTES:

1. ——— Indicates the limits of the unit.
2. All areas and improvements exclusive of the unit are common elements of the condominium.
3. The unit plan shown is representational. The dimensions shown may vary.
4. Some units may be reversed or a mirror image of the plan shown.
5. Refer to the floor plan on sheets 8 through 14 for the location of this unit within the building.
6. The unit plan was prepared by MRI Architectural Group Inc., 3000 North Atlantic Avenue, Cocoa Beach, Florida. This drawing was modified for this exhibit.

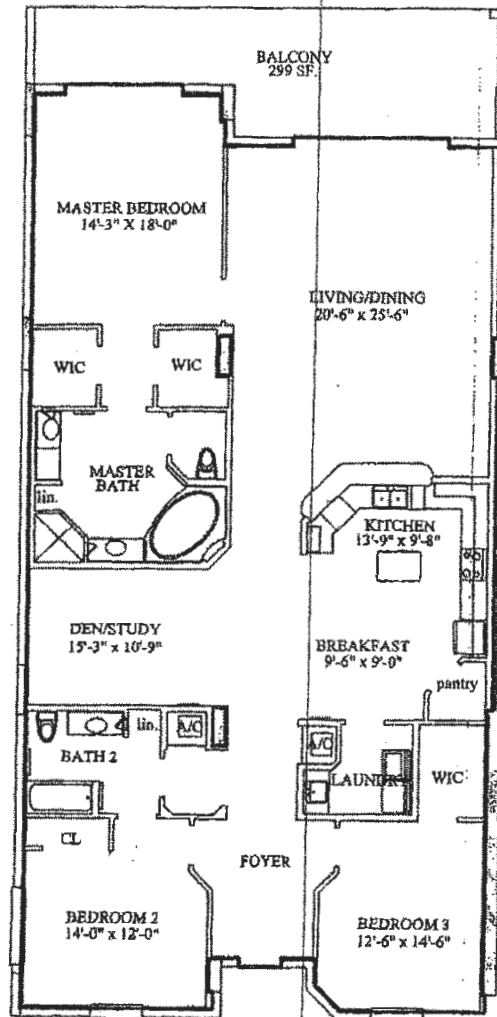
ALLEN ENGINEERING INC.
106 DIXIE LANE
COCOA BEACH FLORIDA
MAY 9, 2005

EXHIBIT "G"

SHEET 21 OF 32

ISLAND POINTE, A CONDOMINIUM PHASE 2

BUILDING 2A - UNIT PLAN E1



SCALE: 1"=10'

UNIT E ISLAND POINTE - 2A

3 bdrm and 2 bath with den/study
LIVING - 2,528 sf.
BALCONY - 299 sf.

SURVEYOR'S NOTES:

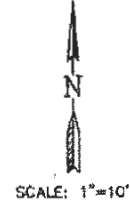
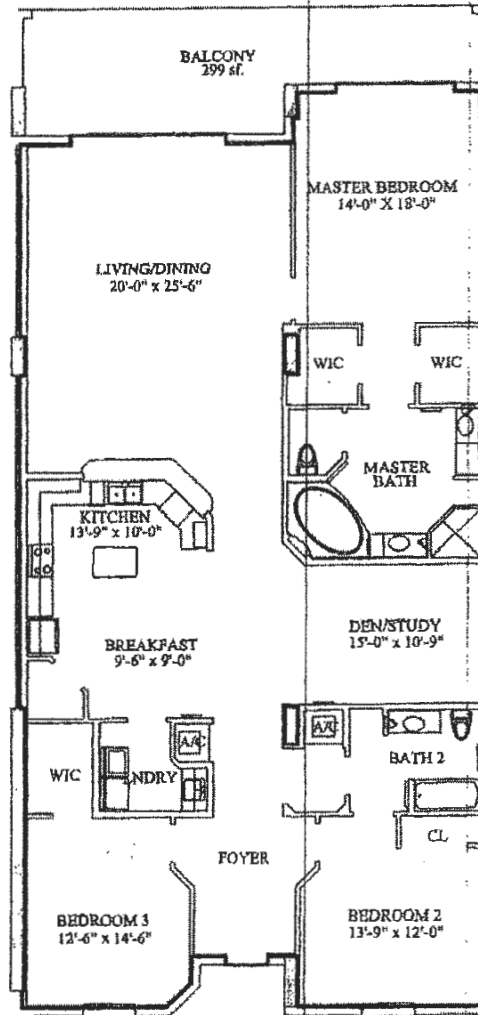
1. ——— Indicates the limits of the unit.
2. All areas and improvements exclusive of the unit are common elements of the condominium.
3. The unit plan shown is representational. The dimensions shown may vary.
4. Some units may be reversed or a mirror image of the plan shown.
5. Refer to the floor plan on sheets B through 15 for the location of this unit within the building.
6. The unit plan was prepared by MRI Architectural Group Inc., 3000 North Atlantic Avenue, Cocoa Beach, Florida. This drawing was modified for this exhibit.

ALLEN ENGINEERING INC.
106 DIXIE LANE
COCOA BEACH FLORIDA
MAY 9, 2005

EXHIBIT "G"

SHEET 22 OF 32

ISLAND POINTE, A CONDOMINIUM PHASE 2 BUILDING 2A - UNIT PLAN E2



**UNIT E2
ISLAND POINTE - 2A**
3 bdrn and 2 bath
LIVING - 2504 sf.
BALCONY - 299 sf.

SURVEYOR'S NOTES:

1. ——— indicates the limits of the unit.
2. All areas and improvements exclusive of the unit are common elements of the condominium.
3. The unit plan shown is representational. The dimensions shown may vary.
4. Some units may be reversed or a mirror image of the plan shown.
5. Refer to the floor plan on sheets 8 through 15 for the location of this unit within the building.
6. The unit plan was prepared by MRI Architectural Group Inc., 3000 North Atlantic Avenue, Cocoa Beach, Florida. This drawing was modified for this exhibit.

ALLEN ENGINEERING INC.
106 DIXIE LANE
COCOA BEACH FLORIDA
MAY 9, 2005

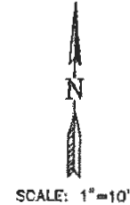
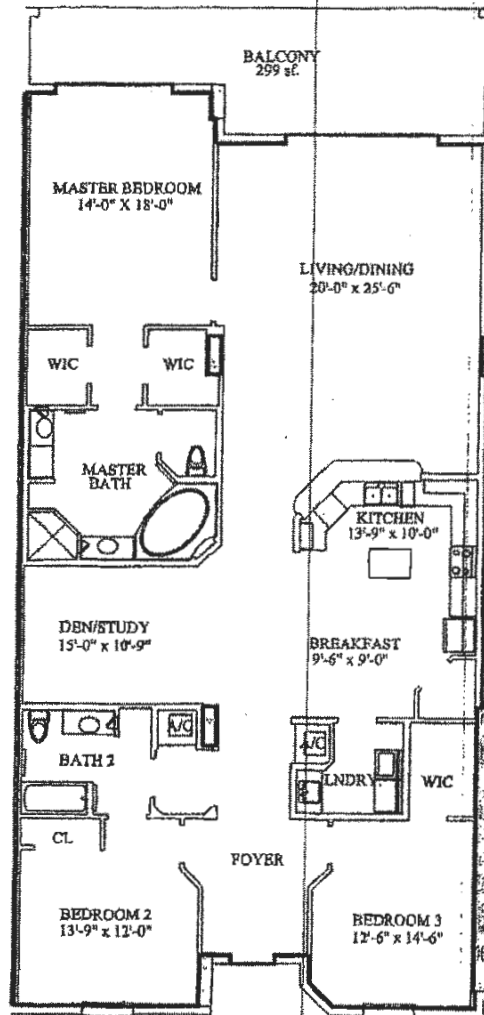
EXHIBIT "G"

SHEET 23 OF 32

L:\Survey\Drawings - 01011907\01011907-2 Island Pointe Condominium - Phase 2\01011907-2 Unit E2.dwg, 5/7/2005, 9:18:50 AM

ISLAND POINTE, A CONDOMINIUM PHASE 2

BUILDING 2A - UNIT PLAN E3



**UNIT E3
ISLAND POINTE-2A**

3 bdrm and 2 bath
LIVING - 2504 sq.
BALCONY - 299 sq.

SURVEYOR'S NOTES:

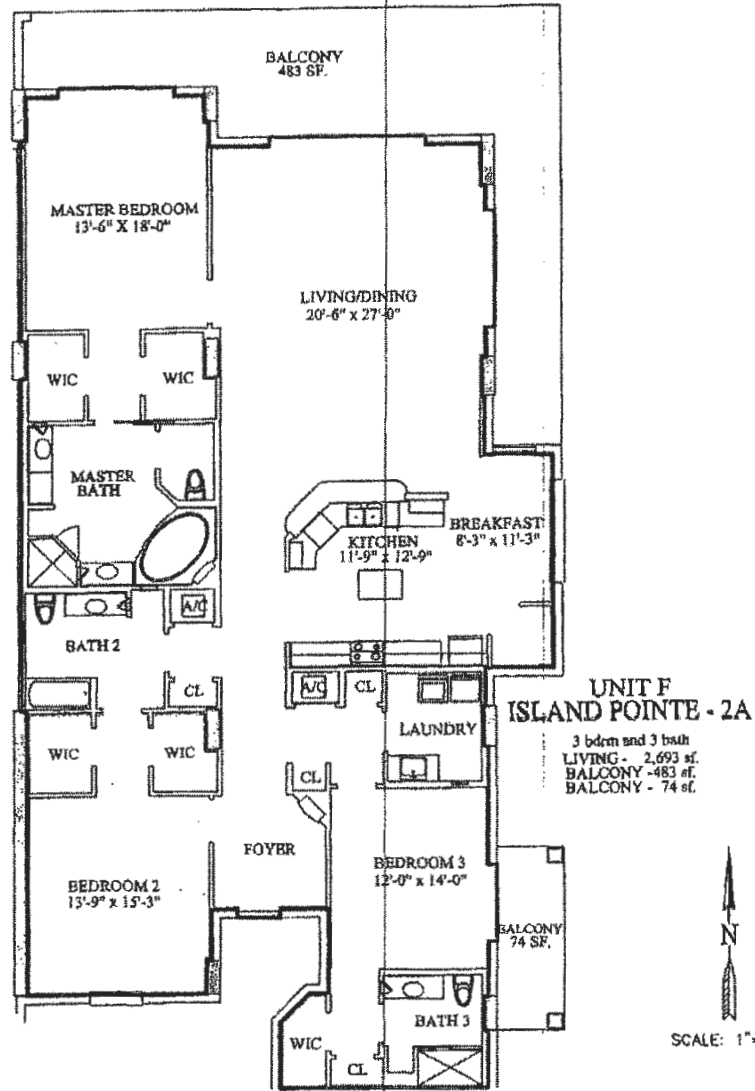
1. ———— Indicates the limits of the unit.
2. All areas and improvements exclusive of the unit are common elements of the condominium.
3. The unit plan shown is representational. The dimensions shown may vary.
4. Some units may be reversed or a mirror image of the plan shown.
5. Refer to the floor plan on sheets 8 through 15 for the location of this unit within the building.
6. The unit plan was prepared by MRI Architectural Group Inc., 3000 North Atlantic Avenue, Cocoa Beach, Florida. This drawing was modified for this exhibit.

ALLEN ENGINEERING INC.
106 DIXIE LANE
COCOA BEACH FLORIDA
MAY 9, 2005

EXHIBIT "G"

SHEET 24 OF 32

ISLAND POINTE, A CONDOMINIUM PHASE 2 BUILDING 2A - UNIT PLAN F



SURVEYOR'S NOTES:

1. ——— Indicates the limits of the unit.
2. All areas and improvements exclusive of the unit are common elements of the condominium.
3. The unit plan shown is representational. The dimensions shown may vary.
4. Some units may be reversed or a mirror image of the plan shown.
5. Refer to the floor plan on sheets 8 through 15 for the location of this unit within the building.
6. The unit plan was prepared by MRi Architectural Group Inc., 3000 North Atlantic Avenue, Cocoa Beach, Florida. This drawing was modified for this exhibit.

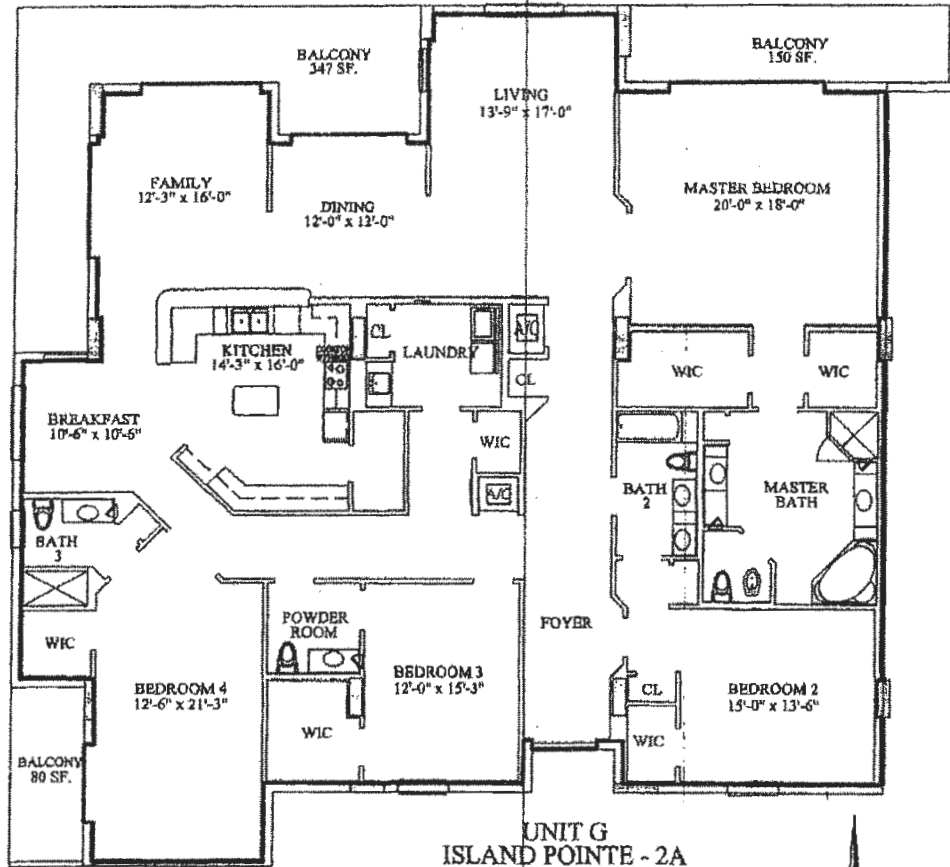
ALLEN ENGINEERING INC.
106 DIXIE LANE
COCOA BEACH FLORIDA
MAY 9, 2005

EXHIBIT "C"

SHEET 25 OF 32

ISLAND POINTE, A CONDOMINIUM PHASE 2

BUILDING 2A - UNIT PLAN G



UNIT G
ISLAND POINTE - 2A

4 bdrms and 3.5 bath
LIVING - 3,655 sf.
BALCONY - 347 sf.
BALCONY - 150 sf.
BALCONY - 80 sf.



SCALE: 1"=10'

SURVEYOR'S NOTES:

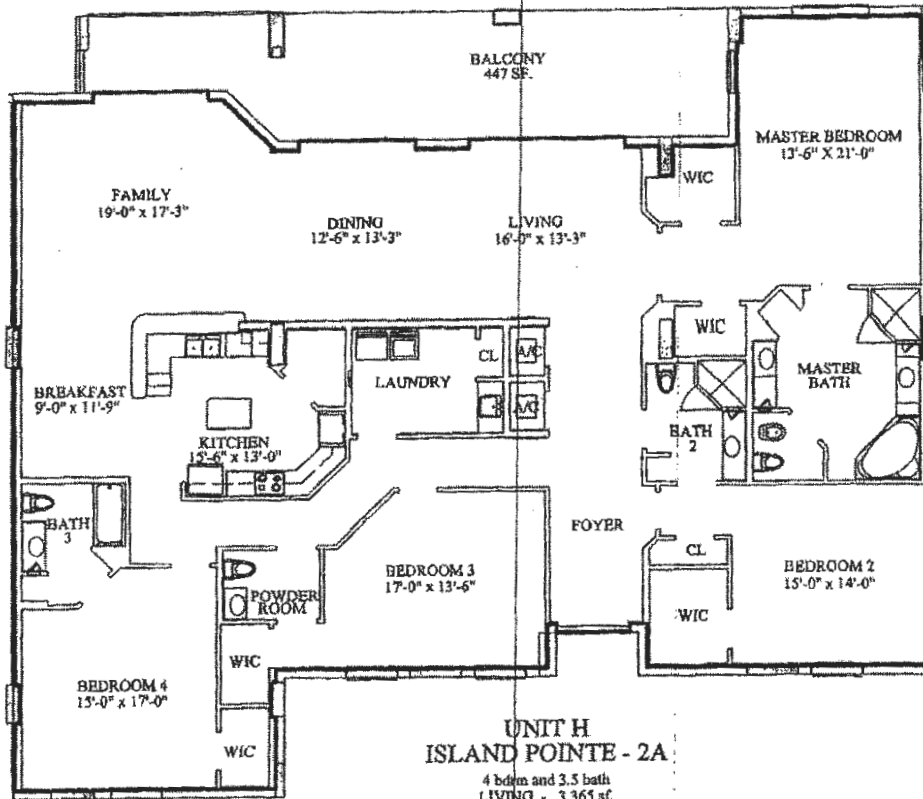
1. ——— indicates the limits of the unit.
2. All areas and improvements exclusive of the unit are common elements of the condominium.
3. The unit plan shown is representational. The dimensions shown may vary.
4. Some units may be reversed or a mirror image of the plan shown.
5. Refer to the floor plan on sheet 15 for the location of this unit within the building.
6. The unit plan was prepared by MRI Architectural Group Inc., 3000 North Atlantic Avenue, Cocoa Beach, Florida. This drawing was modified for this exhibit.

ALLEN ENGINEERING INC.
106 DIXIE LANE
COCOA BEACH FLORIDA
MAY 9, 2005

EXHIBIT "G"

SHEET 26 OF 32

ISLAND POINTE, A CONDOMINIUM PHASE 2 BUILDING 2A - UNIT PLAN H



SCALE: 1"=10'

SURVEYOR'S NOTES:

1. ——— indicates the limits of the unit.
2. All areas and improvements exclusive of the unit are common elements of the condominium.
3. The unit plan shown is representational. The dimensions shown may vary.
4. Some units may be reversed or a mirror image of the plan shown.
5. Refer to the floor plan on sheet 15 for the location of this unit within the building.
6. The unit plan was prepared by MRI Architectural Group Inc., 3000 North Atlantic Avenue, Cocoa Beach, Florida. This drawing was modified for this exhibit.

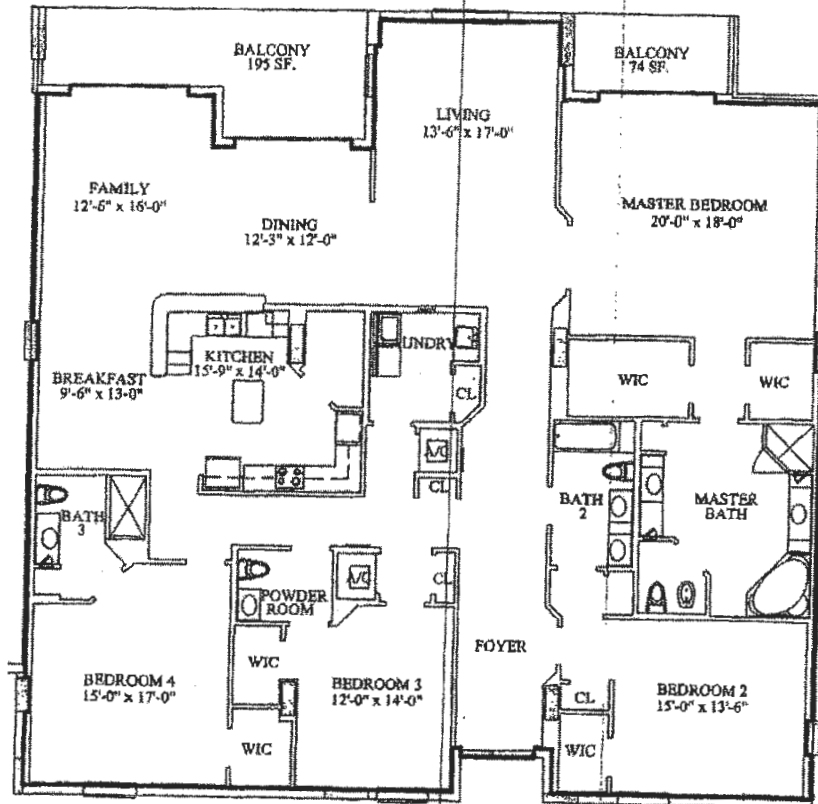
ALLEN ENGINEERING INC.
106 DIXIE LANE
COCOA BEACH, FLORIDA
MAY 9, 2005

EXHIBIT "C"

SHEET 27 OF 32

ISLAND POINTE, A CONDOMINIUM PHASE 2

BUILDING 2A - UNIT PLAN J



UNIT J ISLAND POINTE - 2A

4 bdrm and 3.5 bath
LIVING - 3,408 sf.
BALCONY - 195 sf.
BALCONY - 74 sf.



SCALE: 1"=10'

SURVEYOR'S NOTES:

1. ——— indicates the limits of the unit.
2. All areas and improvements exclusive of the unit are common elements of the condominium.
3. The unit plan shown is representational. The dimensions shown may vary.
4. Some units may be reversed or a mirror image of the plan shown.
5. Refer to the floor plan on sheet 15 for the location of this unit within the building.
6. The unit plan was prepared by MRI Architectural Group Inc., 3000 North Atlantic Avenue, Cocoa Beach, Florida. This drawing was modified for this exhibit.

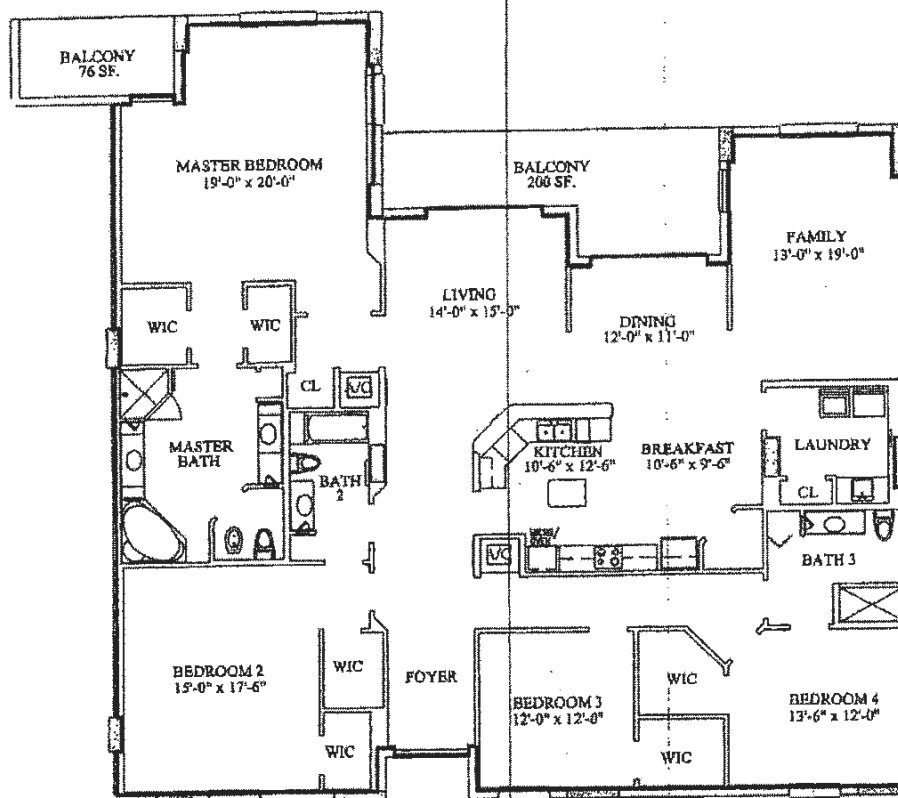
ALLEN ENGINEERING INC.
106 DIXIE LANE
COCOA BEACH FLORIDA
MAY 9, 2005

EXHIBIT "G"

SHEET 28 OF 32

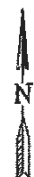
ISLAND POINTE, A CONDOMINIUM PHASE 2

BUILDING 2A - UNIT PLAN K



UNIT K ISLAND POINTE - 2A

4 bdrn and 3 bath
LIVING - 3,125 sf.
BALCONY - 200 sf.
BALCONY - 76 sf.



SCALE: 1"=10'

SURVEYOR'S NOTES:

1. ——— Indicates the limits of the unit.
2. All areas and improvements exclusive of the unit are common elements of the condominium.
3. The unit plan shown is representational. The dimensions shown may vary.
4. Some units may be reversed or a mirror image of the plan shown.
5. Refer to the floor plan on sheet 15 for the location of this unit within the building.
6. The unit plan was prepared by MRI Architectural Group Inc., 3000 North Atlantic Avenue, Cocoa Beach, Florida. This drawing was modified for this exhibit.

ALLEN ENGINEERING INC.
106 DIXIE LANE
COCOA BEACH FLORIDA
MAY 9, 2005

EXHIBIT "A"

SHEET 29 OF 32